

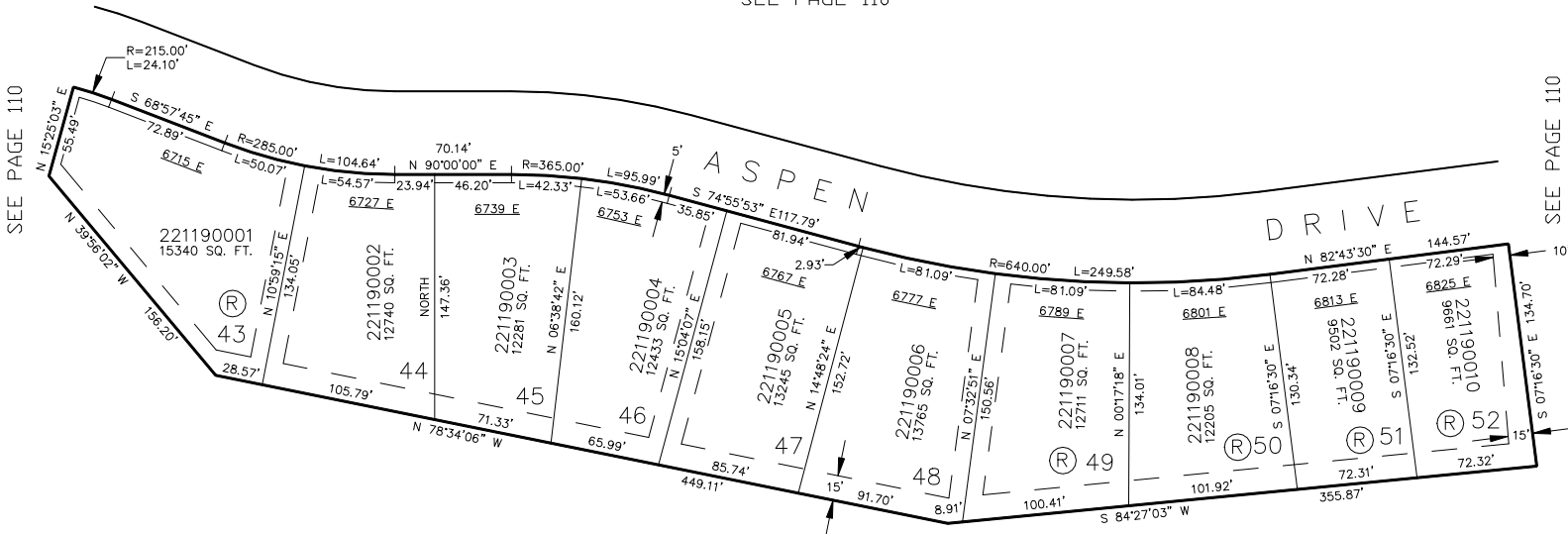
PART OF SEC. 1, T.7N., R.1E., S.L.B. & M.
POWDER MOUNTAIN WEST SUBDIVISION – PHASE 3

IN WEBER COUNTY

TAXING UNIT: 90

SCALE 1" = 60'

SEE PAGE 110



SEE PAGE 1-2

(R) LOTS SHALL REQUIRE COUNTY
HILLSIDE REVIEW APPROVAL
FOR COMPLETE ENG DATA SEE
ORIGINAL DEDICATION PLAT IN
BOOK 39, PAGE 93 OF RECORDS.

10' UTILITY & DRAINAGE EASEMENTS EACH
SIDE OF PROPERTY LINES AS INDICATED
BY DASHED LINES EXCEPT AS OTHERWISE
SHOWN.